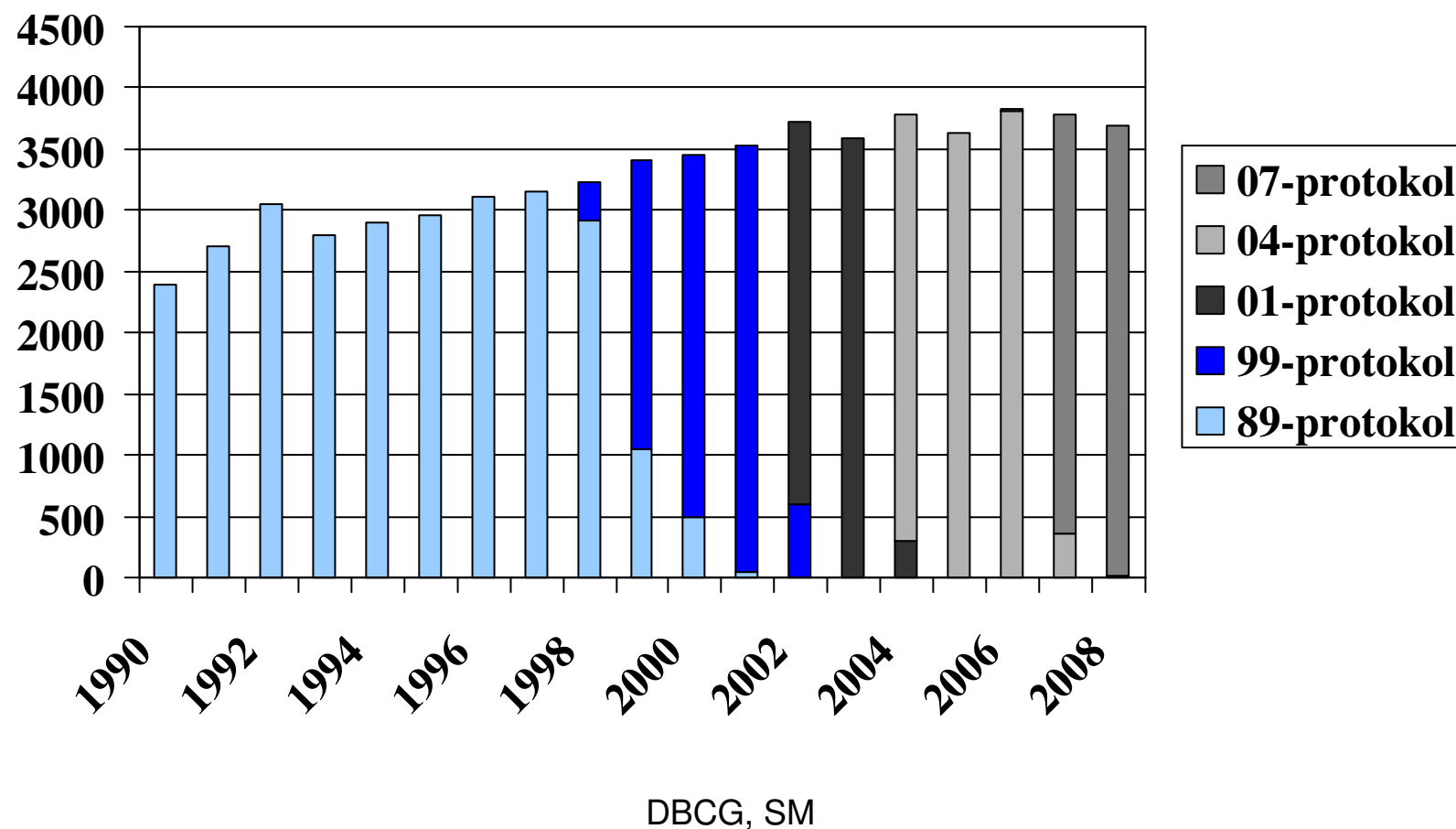


Repræsentantskabs møde

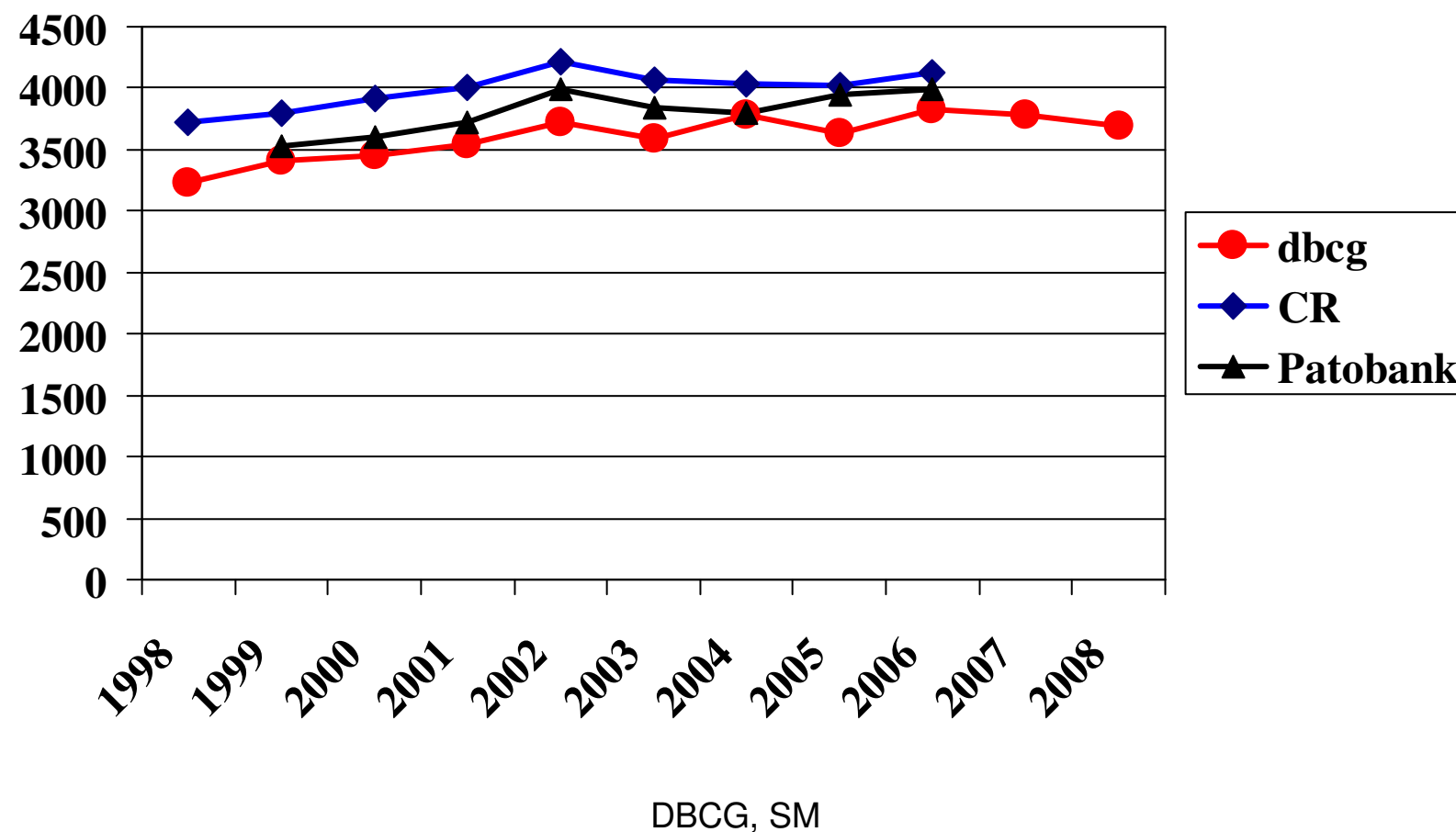
12-1-2009

Susanne Møller
DBCG

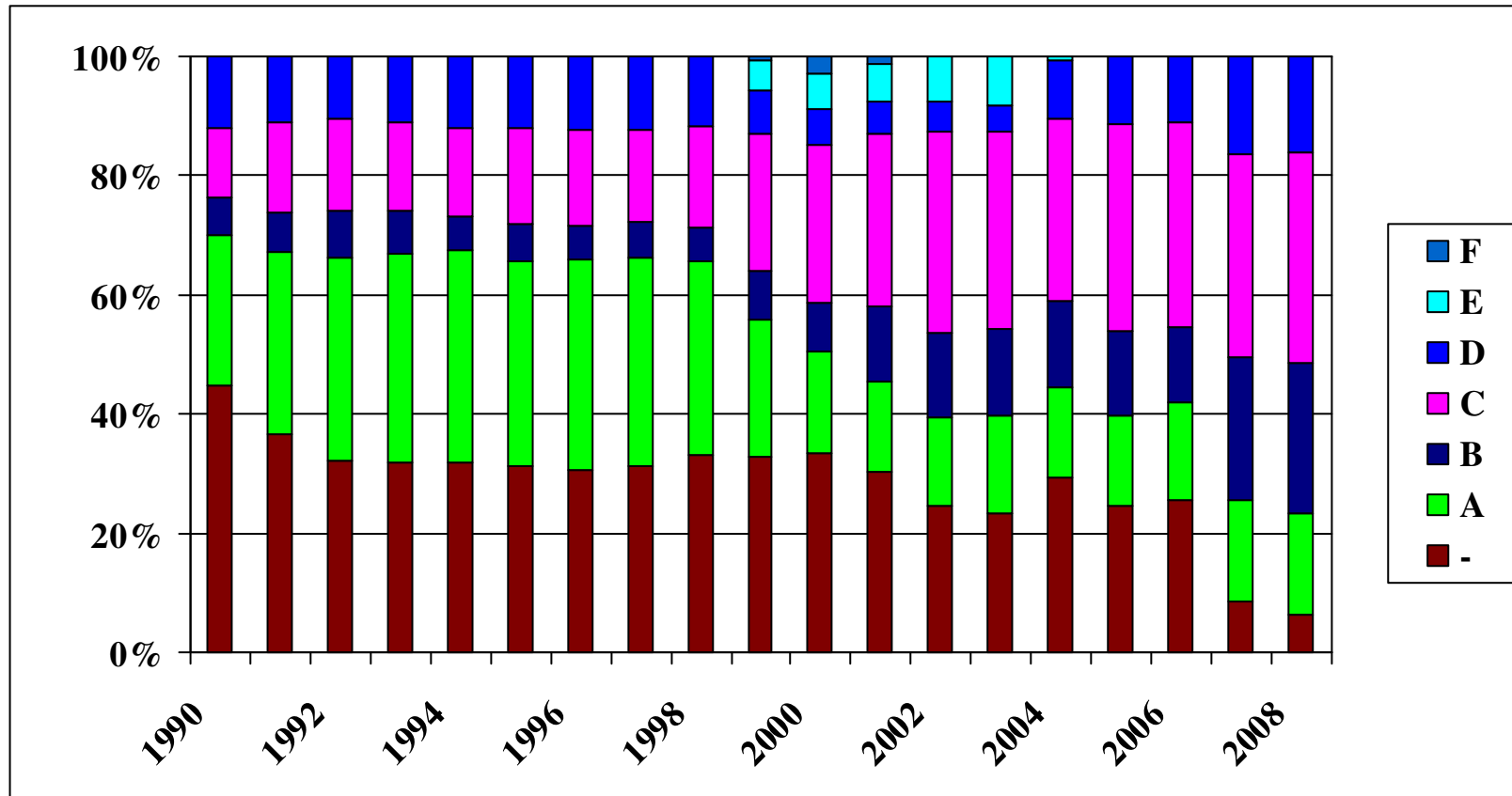
Antal i DBCG 89/99/01/04/07 pr år (n=62.770)



Antal registreringer af pt. med primær invasiv cancer i DBCG vs CR vs Patobank



Fordeling på protokol pr år



DBCG, SM

Fordeling på protokoller i 2008

Protokol	Kriterier	Medicinsk efterbeh.	Antal (n=3684)
Ikke i protokol			236 (6.4%)
A	Lavrisiko: >35 år N-, tumor<=2 cm (duktal, I or lobulær I-II or Anden diag) R+/? , HER2 -/? , Top2A normal/?	Ingen	625 (17%)
B,t	<60 år, R+/R?, HER2 +	KT, ET, T	140 (3.8%)
B	<60 år, R+/R?, HER2 -/?	KT,ET	786 (21%)
C	>=60 år, R+/R?	ET	1309 (36%)
D,t	R-, HER2 +	KT, T	185 (5.0%)
D	R-, HER2 -/?	KT	403 (11%)

DBCG, SM

Randomiserede protokoller i 2008

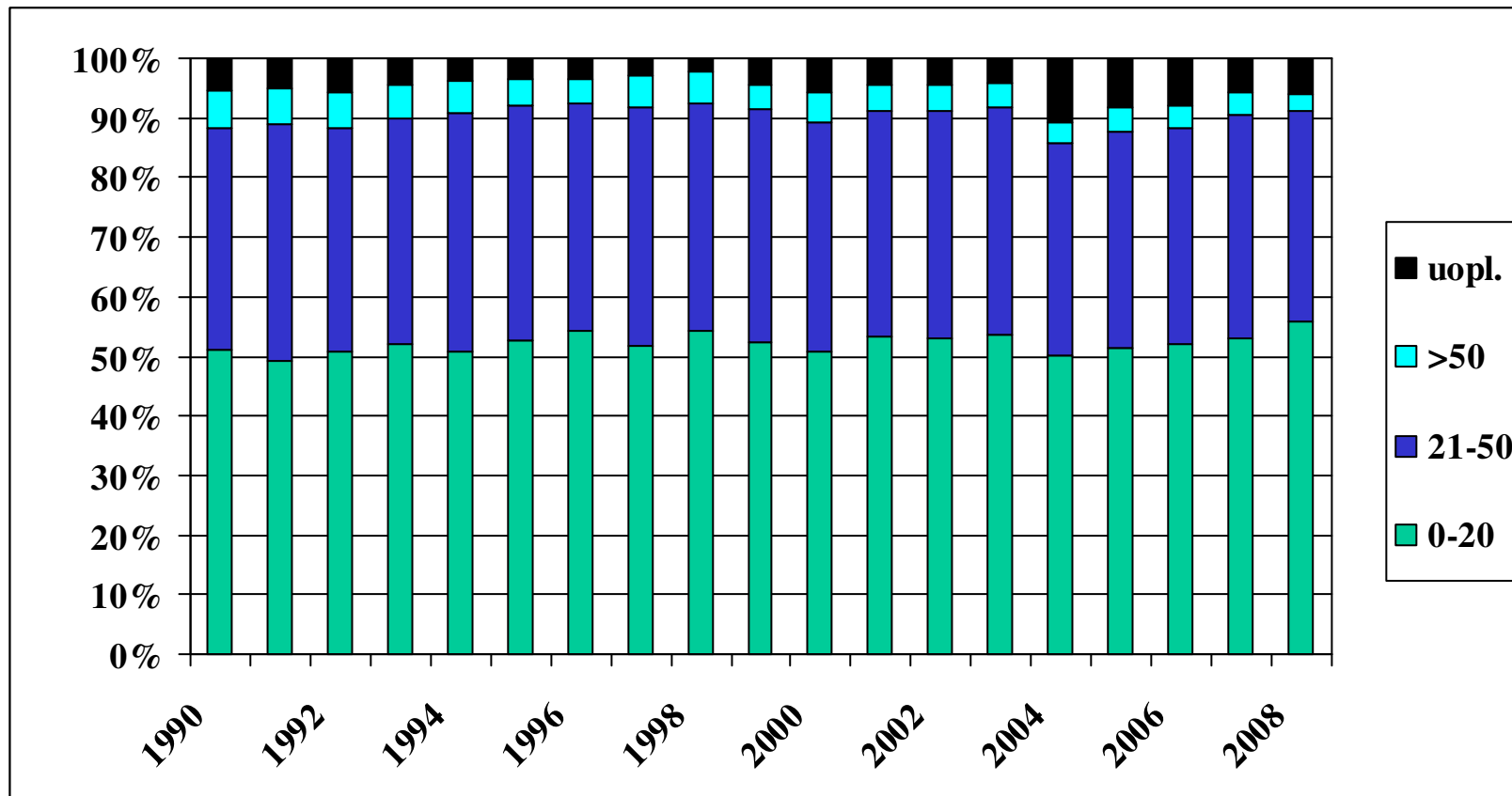
Protokol	Regime	Antal
READ (start juli 08)	1 EC → Docetaxel	35
	2 Docetaxel+ Cyklofosamid	32
		I alt 67
ALTTO (start Nov 07)	1 Trastuzumab	32
	2 Lapatinib	26
	3 Trastuzumab → Lapatinib	26
	4 Trastuzumab + Lapatinib	24
		I alt 108

Årsager til ikke protokol i 2008 , n=236

Årsag	antal	Andel af 236 pt.
Fjernmetastaser	59	25 %
Tidl.malign	77	-
Sarkom/phylloides	4	1.7 %
Bilateral	103	-
Kontraindikation (f.eks. Alder)	109	-
Teknisk inoperabel	79	-
Ikke opereret ifølge dbcg	303	-
Andet	142	60 %
<i>Død <4 uger efter operation</i>	3	1.3 %
<i>Fejlbehandlet / fejlklassificeret</i>	0	0%
<i>fravalg</i>	30	12.7%
SUM	909	

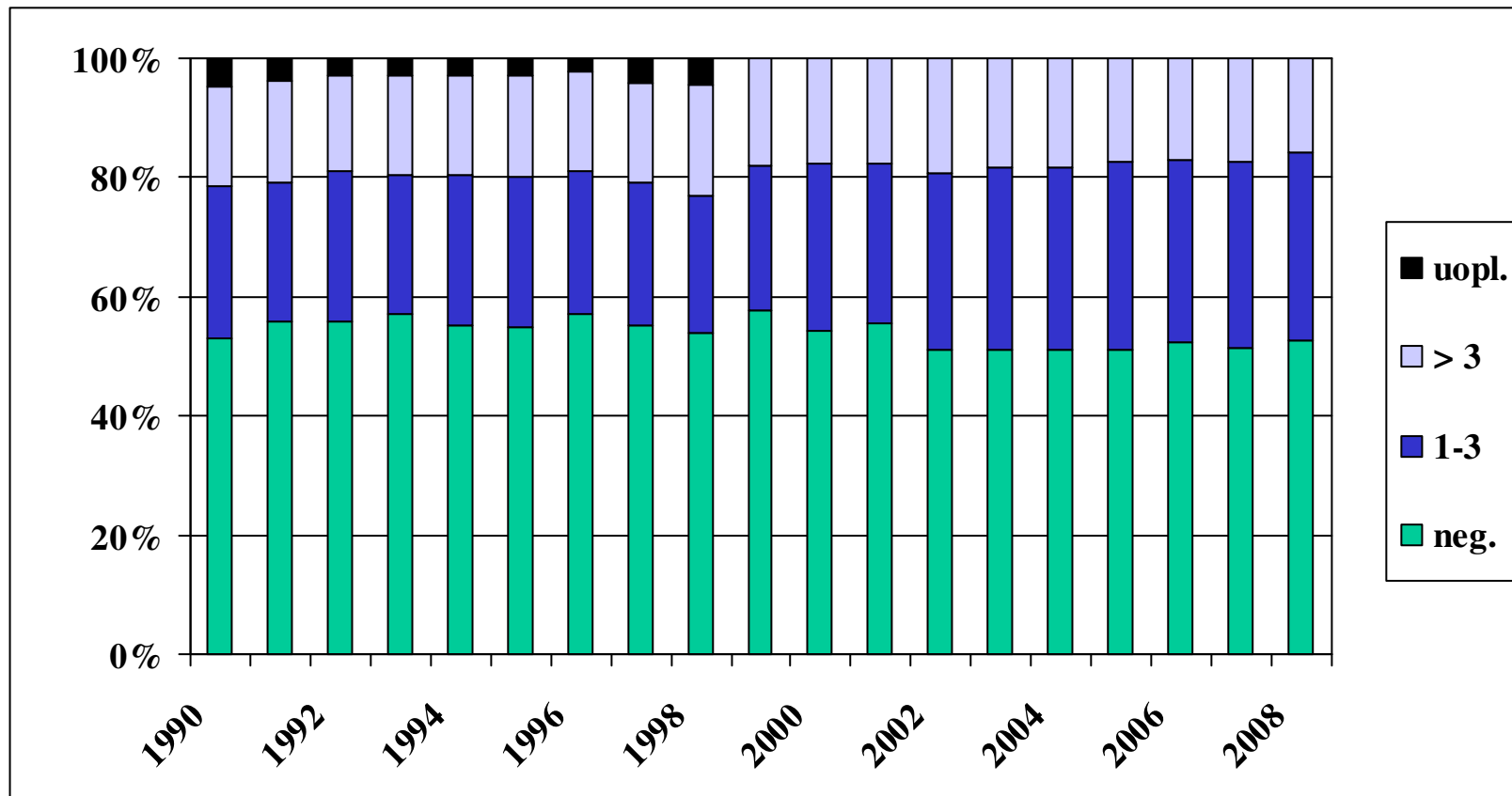
Fordeling af tumorstørrelse pr år

(største diameter i mm)



DBCg, SM

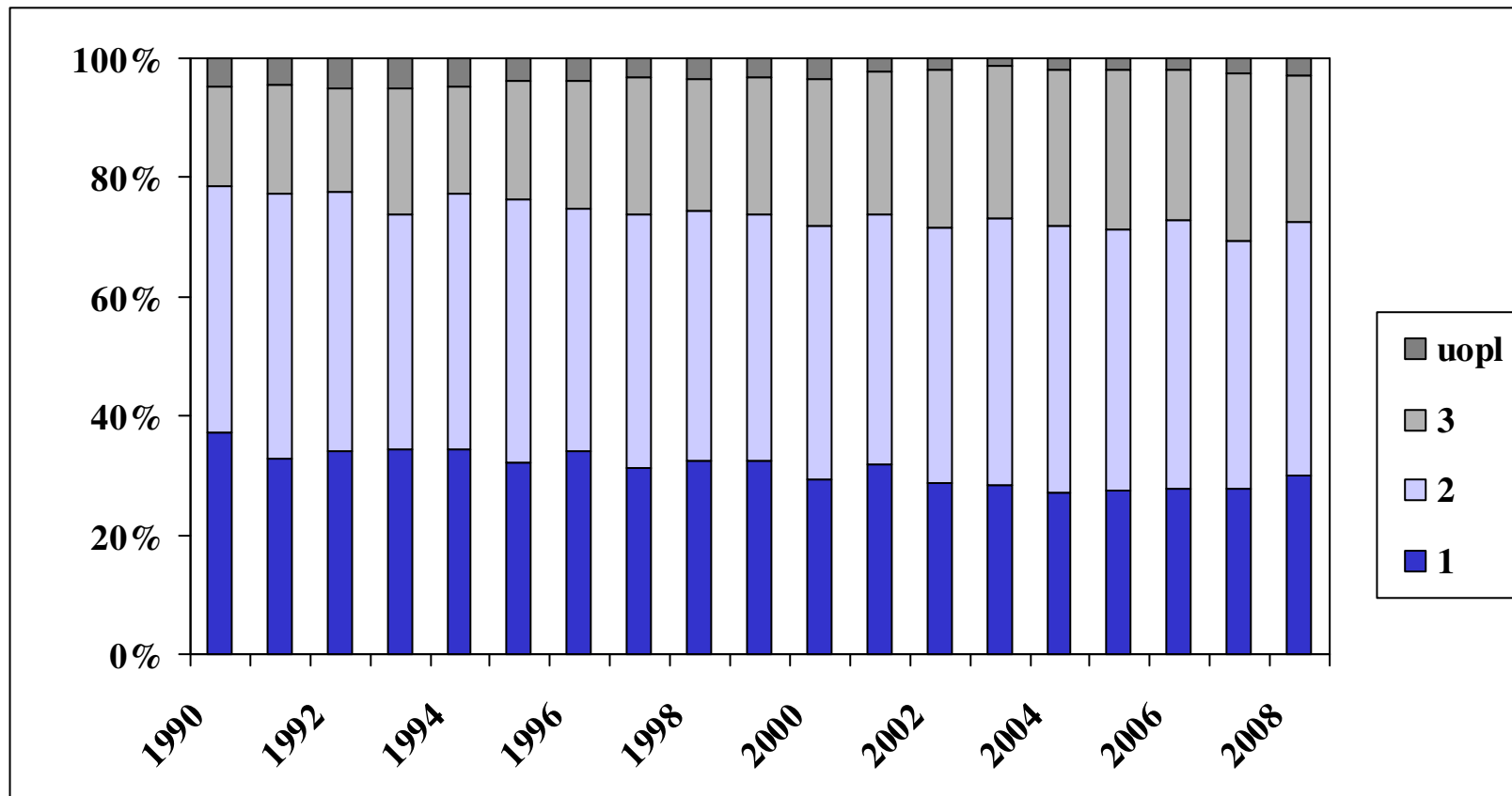
Antal positive lymfeknuder pr år



DBCg, SM

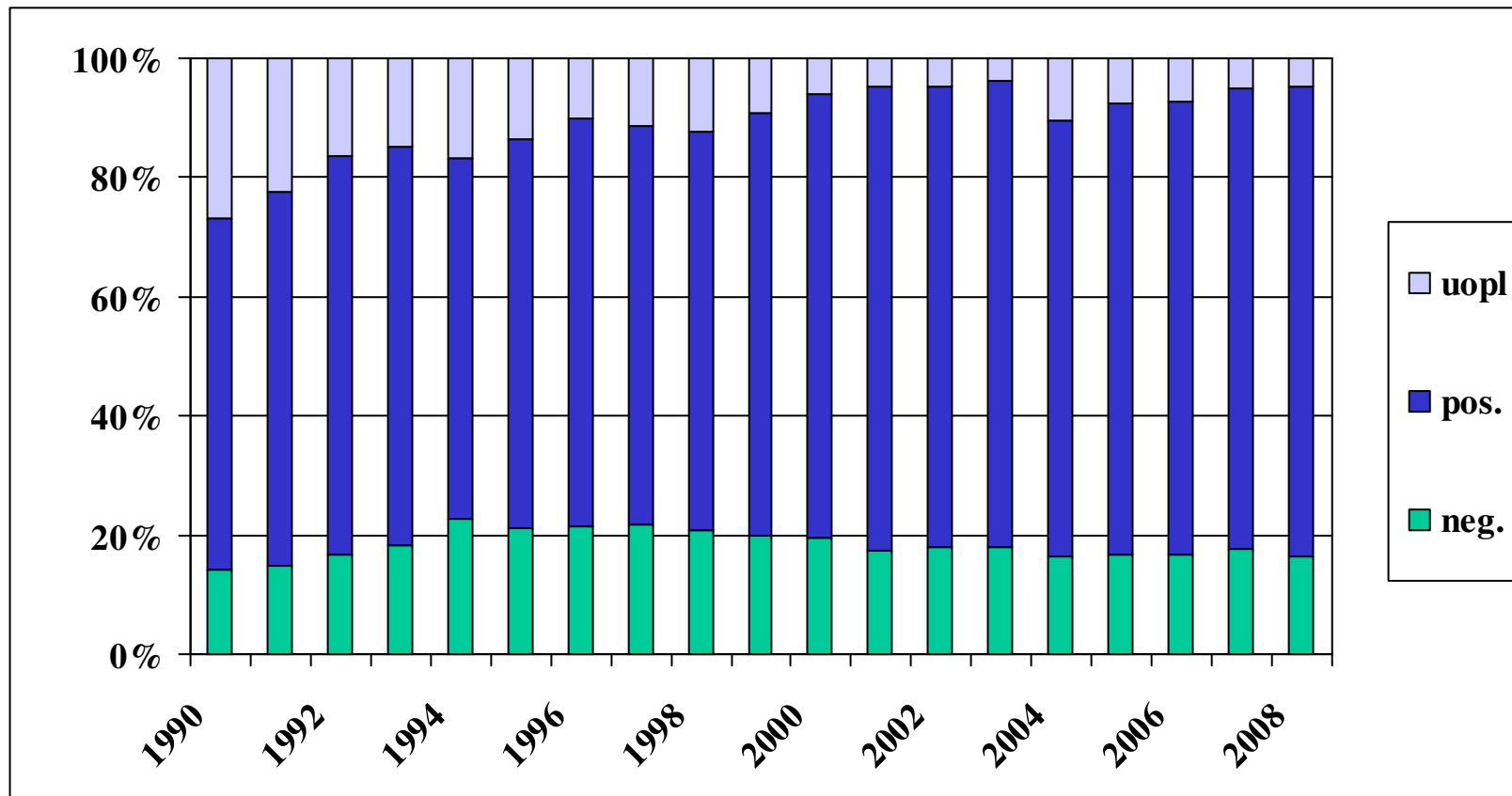
Malignitetsgrad 1-3 pr år

(ductal tumor)



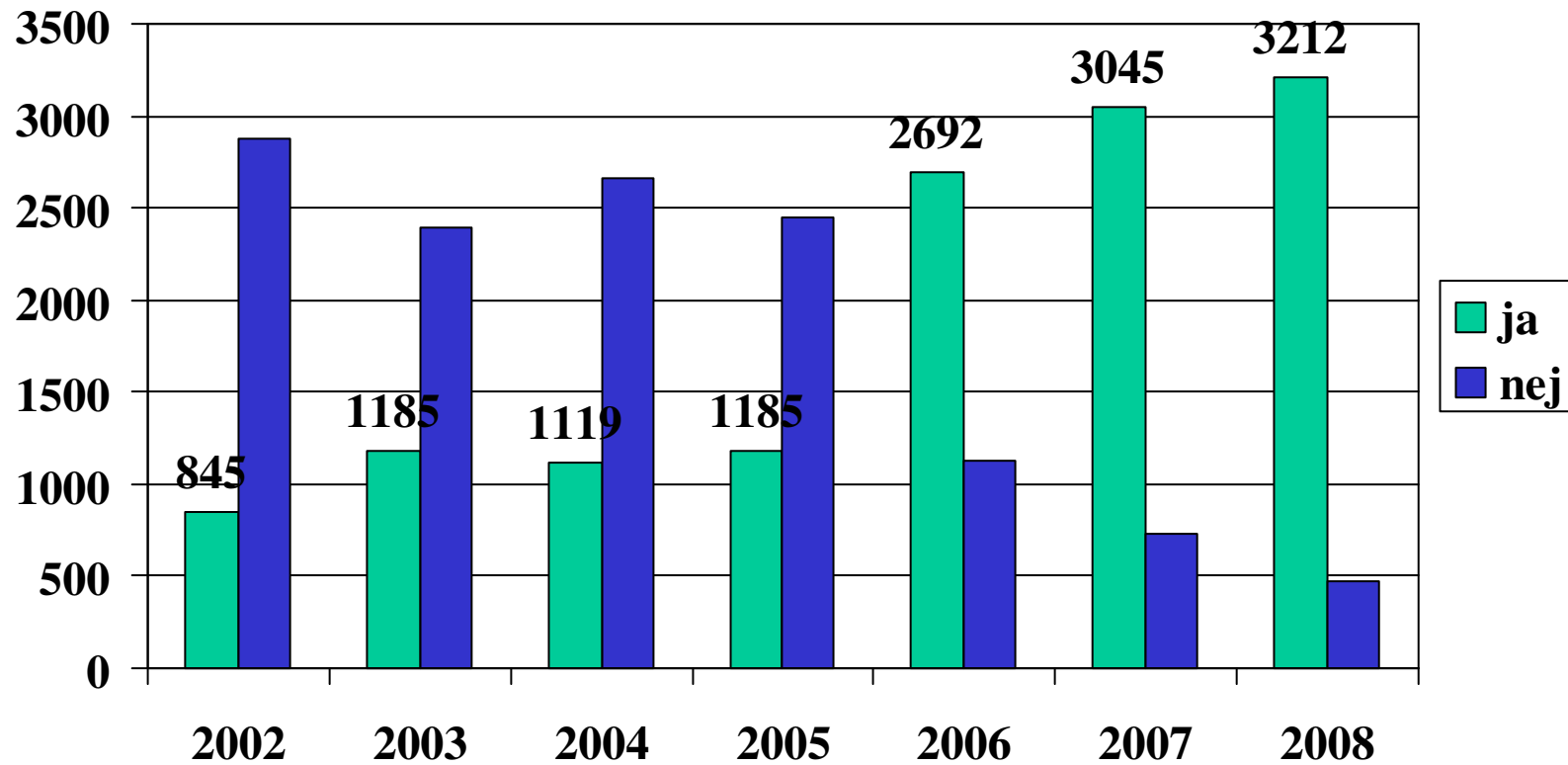
DBCg, SM

Receptorstatus pr år



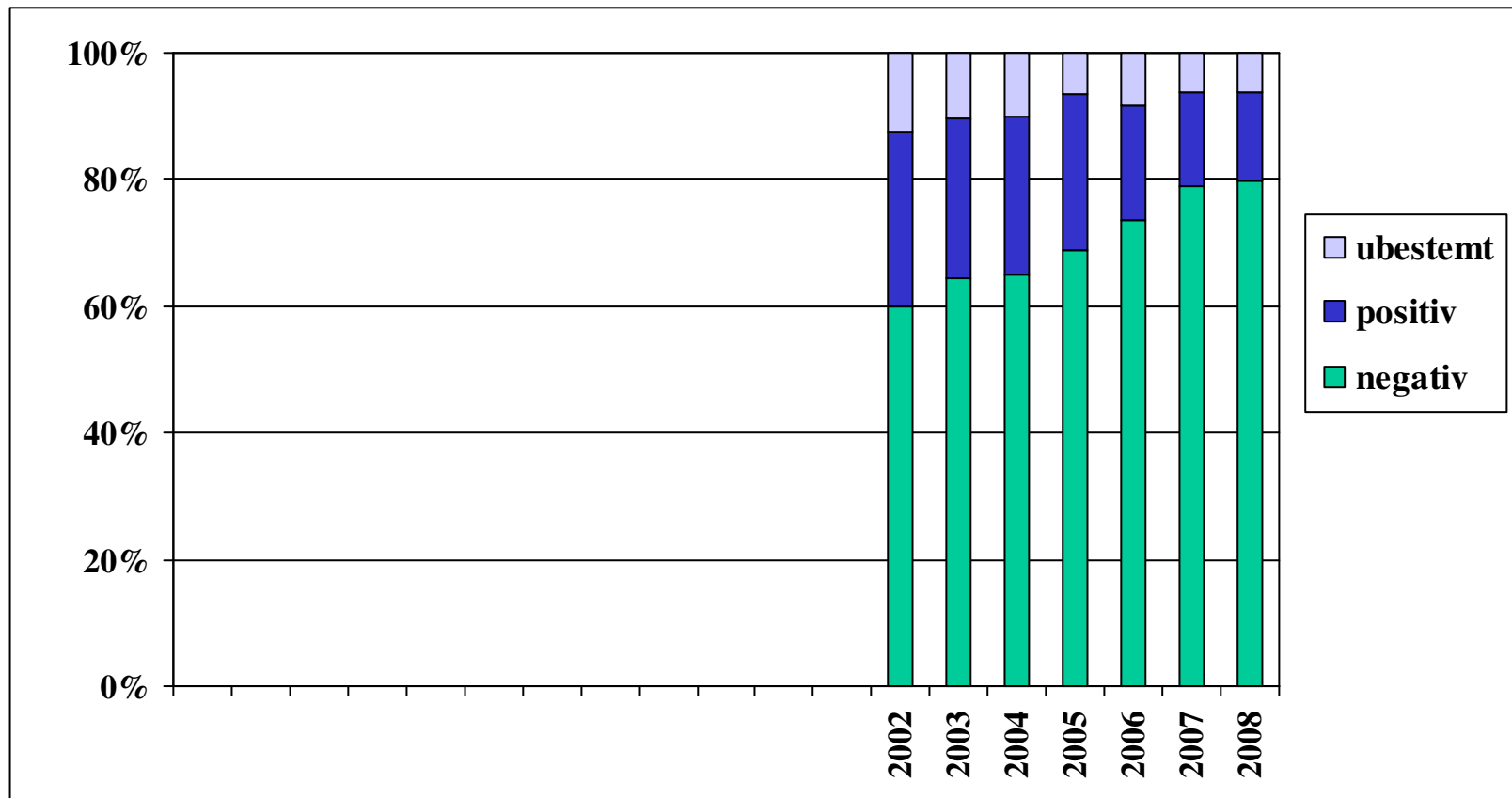
DBCG, SM

HER2 bestemmelser pr år 2002 til 2008



DBCg, SM

HER2 status pr år (2002-2008)

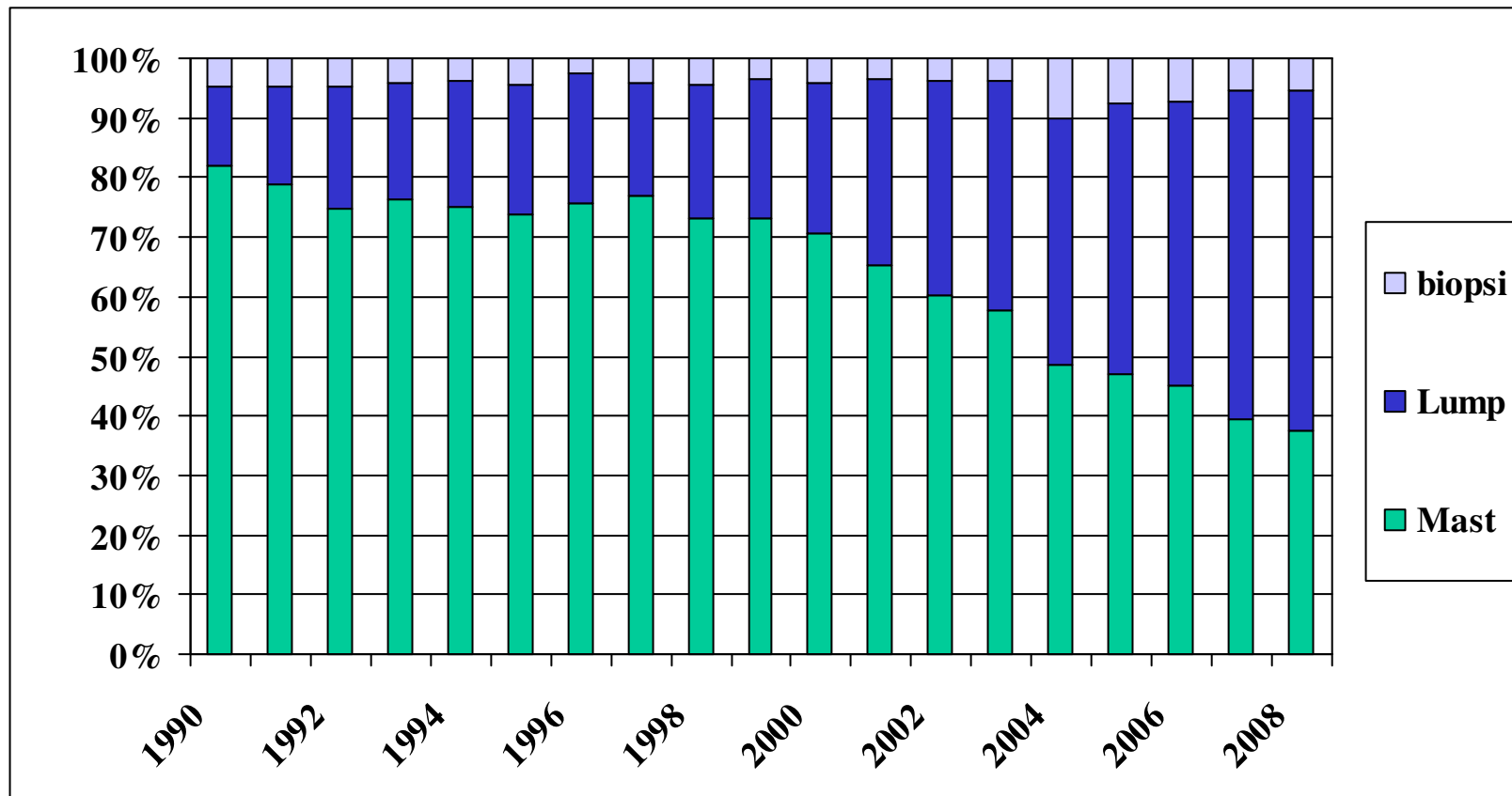


DBCg, SM

TOP2A bestemmelser 2008

- 328 Top2a bestemmelser
 - 272 normale (0.80 \leq fish ratio $<$ 2.00)
 - 15 deleteret (0.00 $<$ fish ratio $<$ 0.80)
 - 41 amplificeret (2.00 \leq fish ratio)

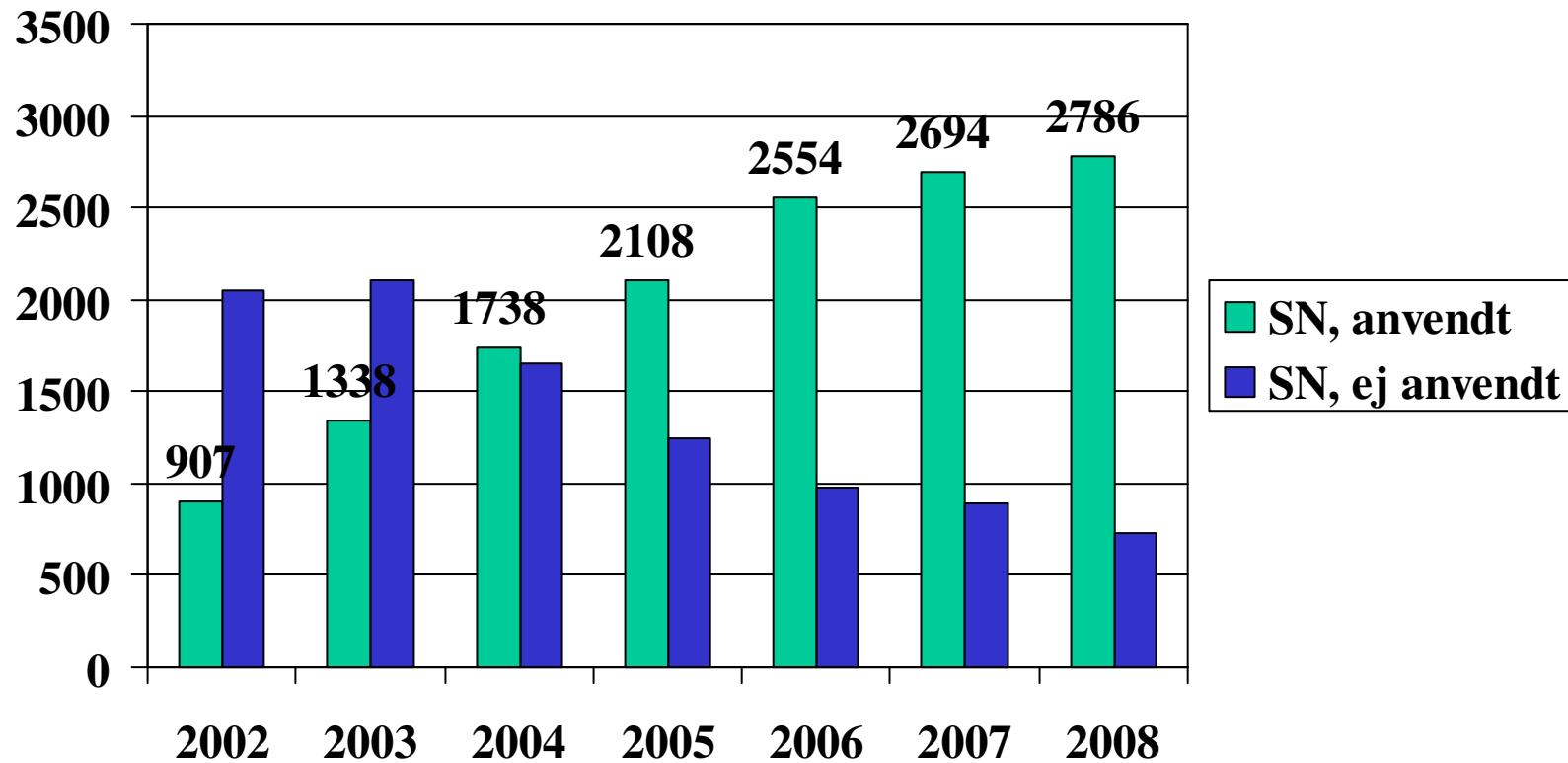
Fordeling af operationstype pr år



DBCg, SM

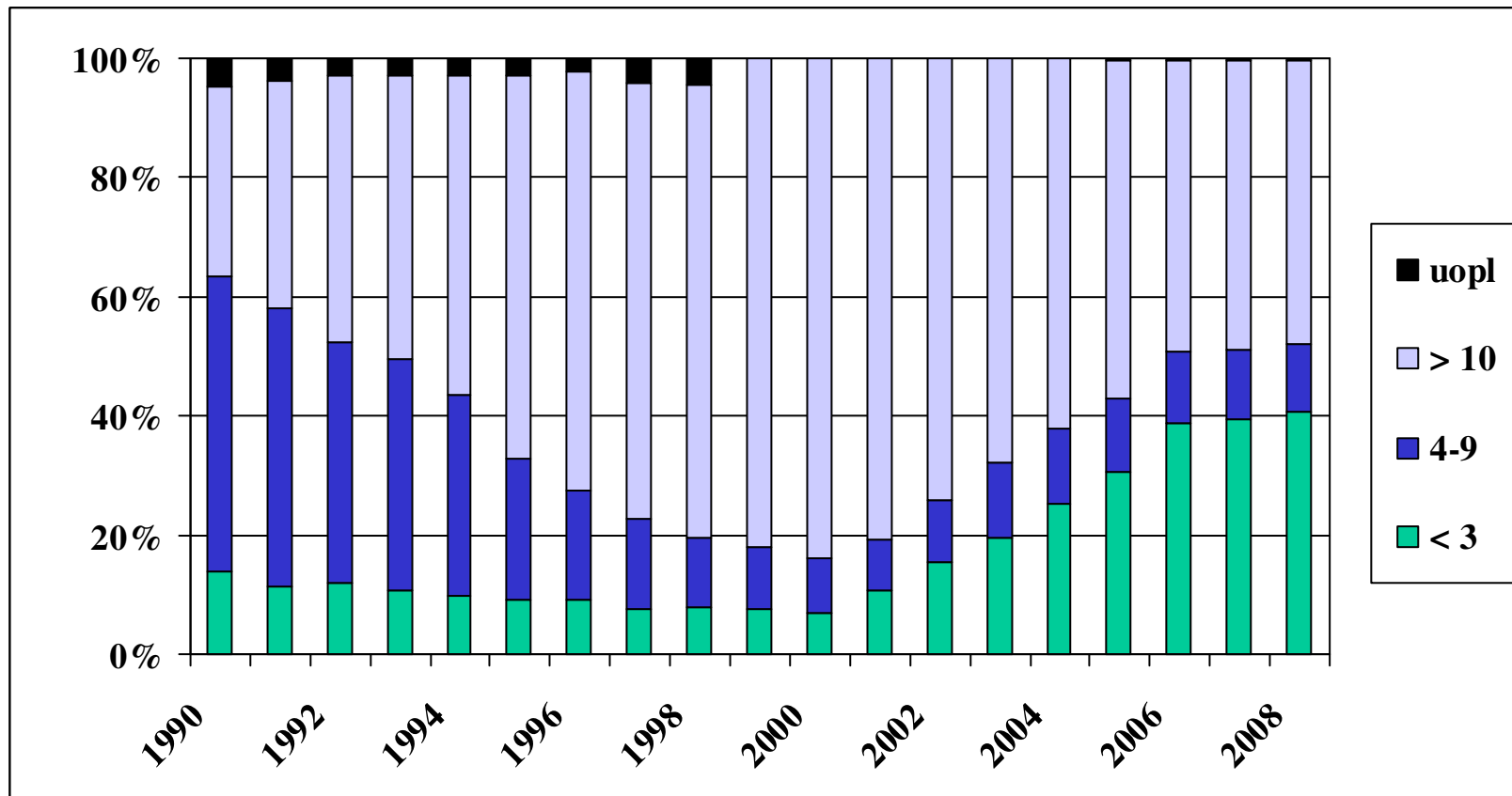
Sentinel Node pr år (Node -/+)

2002 til 2008



DBC, SM

Antal påviste lymfeknuder pr år

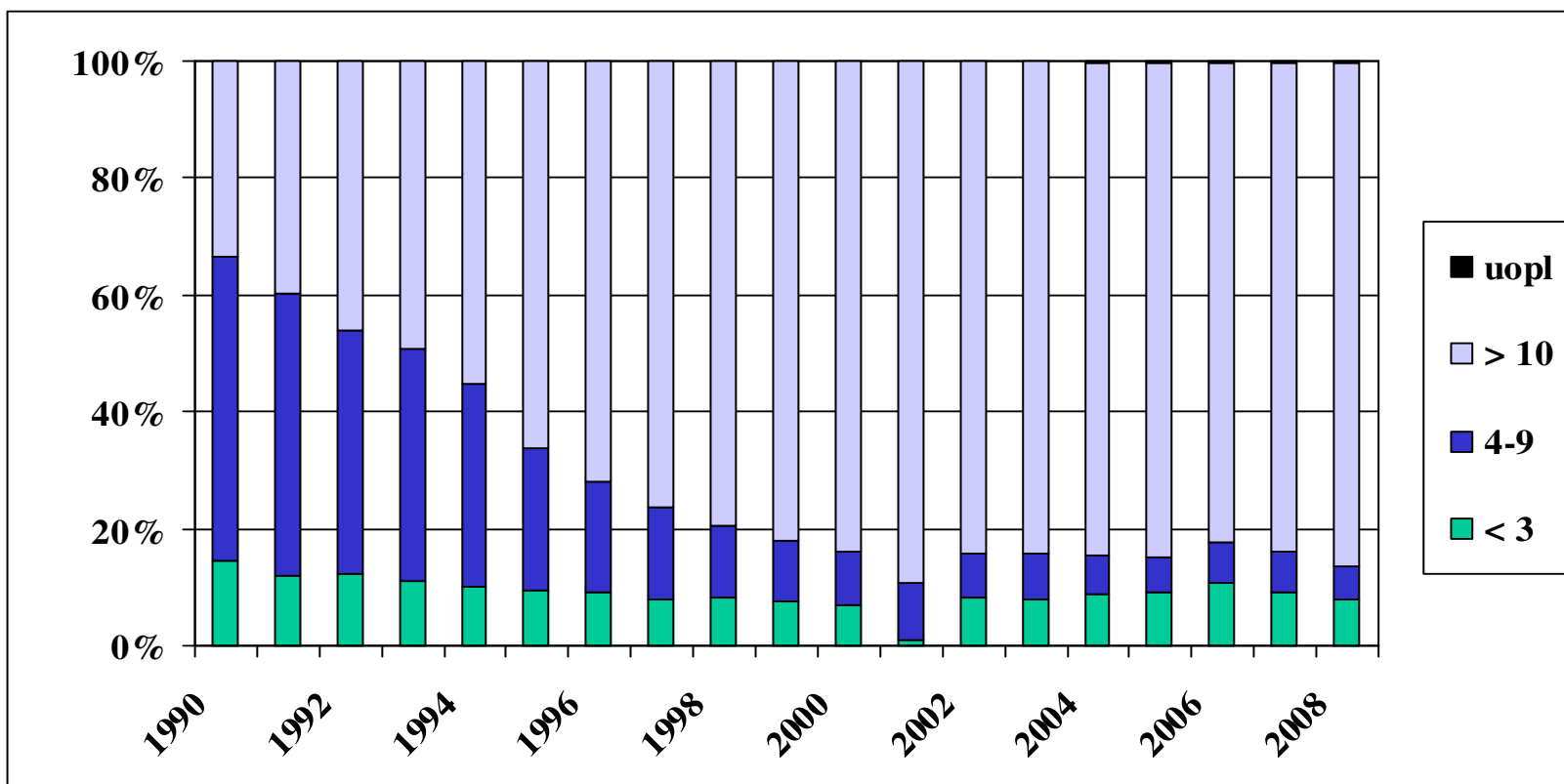


DBCg, SM

Antal påviste lymfeknuder pr år

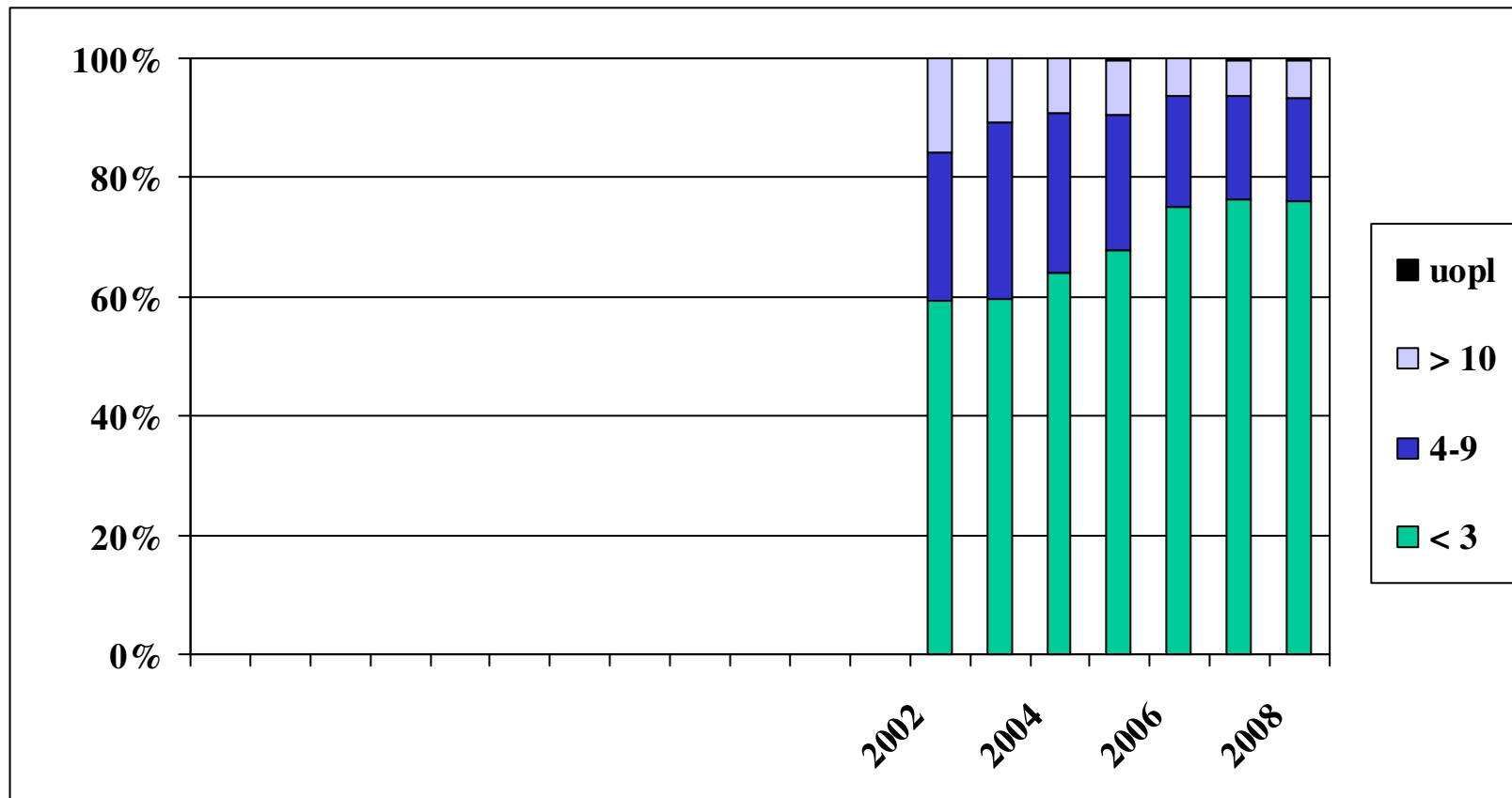
Ikke Sentinel Node

(-SN eller +SN, N-pos)



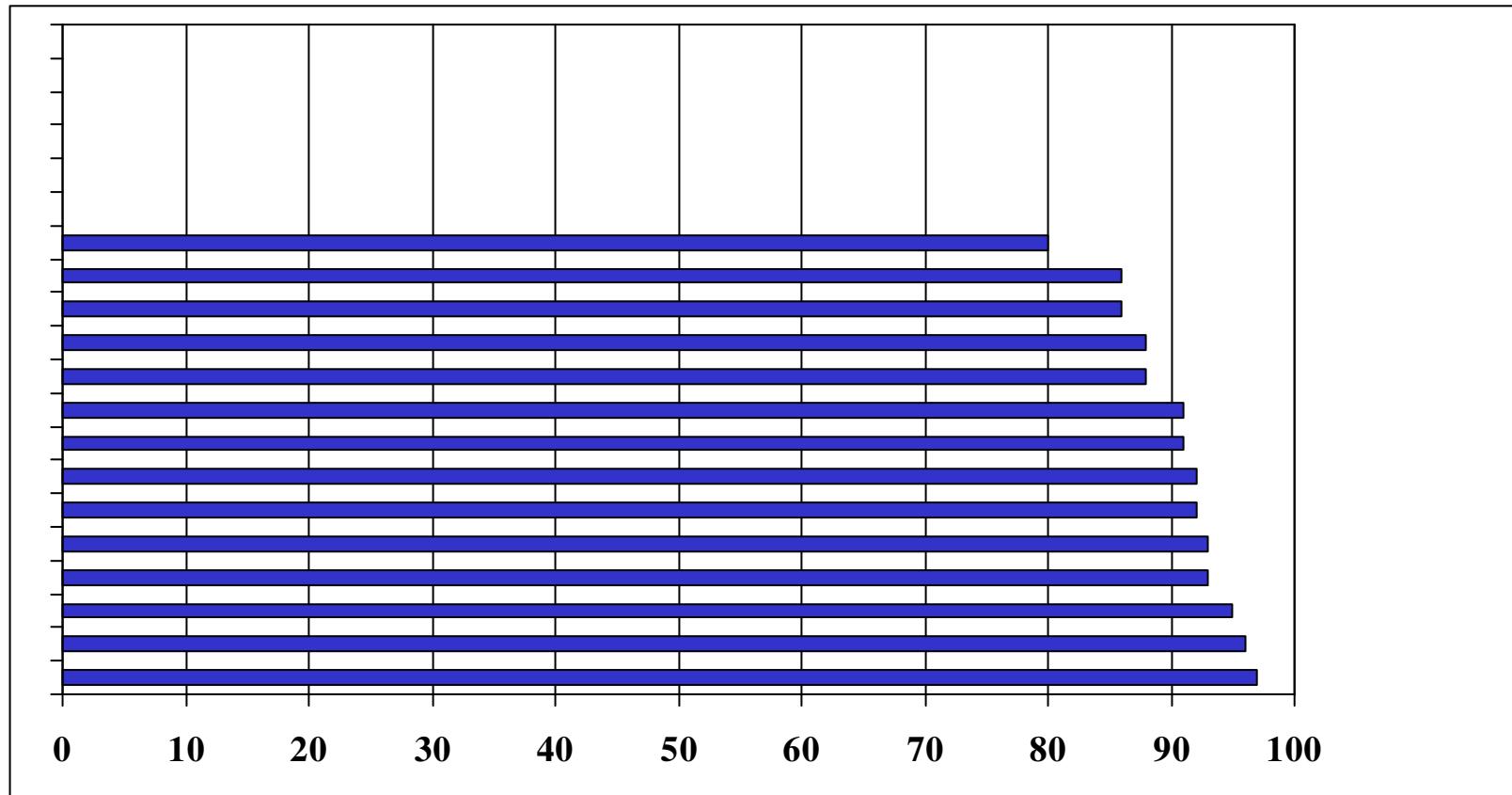
DBCg, SM

Antal påviste lymfeknuder pr år med Sentinel Node (SN, N-neg)



DBCg, SM

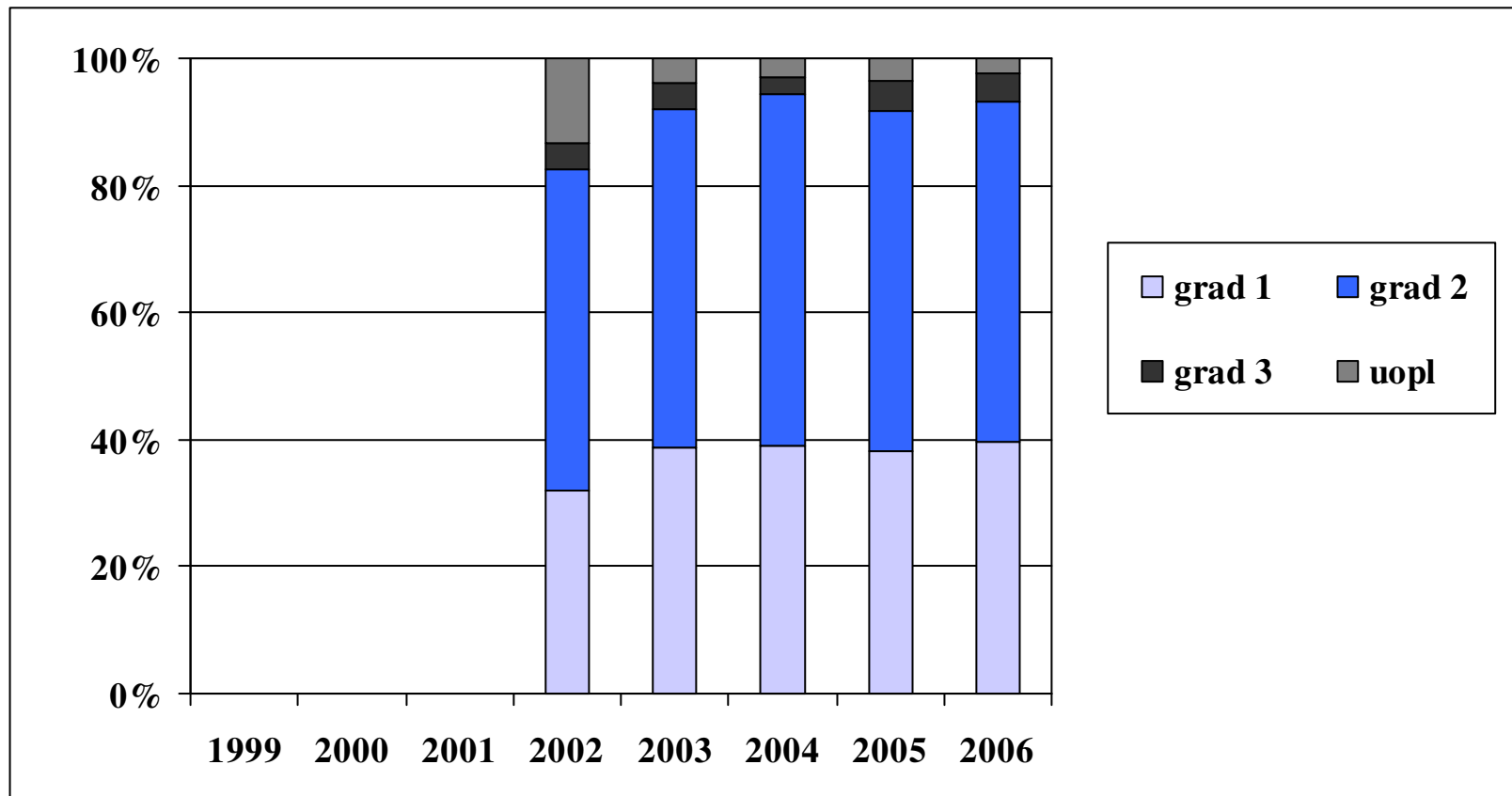
Andel af operationer (-SN) eller (+SN men N+) i 2008 på kvinder <75 år med 10 eller flere påviste lymfeknuder pr patologiafd. (n > 20) median: 92%



DBC, SM

Malignitetsgrad 1-3 pr år

(lobular tumor n=1.810)



DBCg, SM